



# BBF/KSF-V-HS

## BALL VALVE WITH WELD ENDS

**DN 15-200 | PN 25**

**FULL BORE**

### INFORMATION

**Ball Valve with weld ends**

/// Operating temperature up to +150 °C

/// Heating water version

**From DN 150:**

/// Trunnion mounted ball is standard

**From DN 200:**

/// From nominal size DN200 we recommend the use of worm gear units (or planetary gear units up to max. DN400).

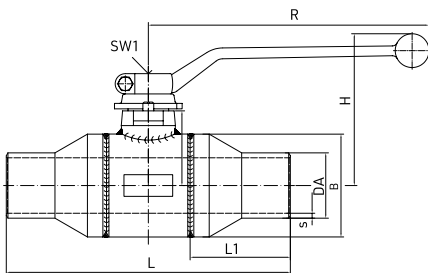
### MATERIALS

<b>Body</b>	Forged Steel / Steel
<b>Weld Ends</b>	Steel
<b>Ball</b>	Stainless steel
<b>Ball Seals</b>	PTFE
<b>Stem Seals</b>	EPDM

### OPTIONS

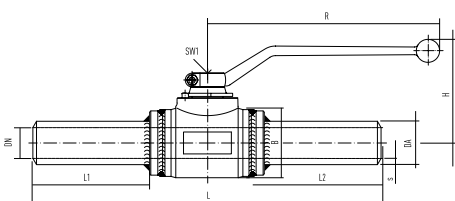
- /// Suitable for steam
- /// Special lengths
- /// Spindle extensions 60mm resp. 100mm
- /// Also available automated with electric or pneumatic actuators.
- /// For deviating operating conditions please send us a written request stating the fluids, as well as the pressure and temperature range.

**Not suitable for oxyacetylene welding**



DN [mm]	PN [bar]	DA [mm]	s [mm]	L [mm]	L1 [mm]	B [mm]	H [mm]	R [mm]	SW 1 [mm]	Wght. [kg]	Article-No.
15	25	21,3	2,6	160	49	39	66	130	10	1,0	010.9120
20	25	26,9	3,2	160	47,5	44	69	130	10	1,3	010.9121
25	25	33,7	3,6	180	55	54	80,5	180	12	1,7	010.9122
32	25	42,4	3,6	200	70,1	63,5	106,3	207,5	15	2,6	010.9123
40	25	48,3	3,6	210	74,1	76	112	207,5	15	3,3	010.9124
50	25	60,3	3,6	250	80	89	125	205	16	4,6	010.7353
65	25	76,1	3,6	270	80	121	140	300	16	8,3	010.8514
80	25	88,9	4,0	280	78	140	160	350	22	11,5	010.3187
100	25	114,3	4,0	300	79	171	175	350	22	16,2	010.3188
125	25	139,7	4,5	350	90	203	195	500	22	27,0	010.3381
150	25	168,3	5,0	400	90	254	240	600	32	51,0	010.3348
200	25	219,1	6,3	460	96	324	275	600	32	82,5	010.2762

**Suitable for oxyacetylene welding, Ensure sufficient cooling of the housing body.**



DN [mm]	PN [bar]	DA [mm]	s [mm]	L [mm]	L1 [mm]	B [mm]	H [mm]	R [mm]	SW 1 [mm]	Wght. [kg]	Article-No.
15	25	21,3	2,6	270	97	39	68	130	10	1,0	010.3233
20	25	26,9	3,2	270	97	44	70	130	10	1,3	010.2936
25	25	33,7	3,2	270	90	54	82	180	12	1,7	010.2955
32	25	42,4	3,2	270	95	64	110	205	16	2,6	010.3309
40	25	48,3	3,2	270	90	76	115	205	16	3,3	010.3431



# BBF/KSF-V-HS

## BALL VALVE WITH WELD ENDS

**DN 150-1200 | PN 25**

**FULL BORE**

### INFORMATION

**Ball Valve with weld ends**

- /// Operating temperature up to +150 °C
- /// Trunnion mounted ball is standard
- /// From nominal size DN150 we recommend the use of worm gear units (or planetary gear units up to max. DN400).
- /// The worm gear with handwheel is included in the scope of delivery.

### MATERIALS

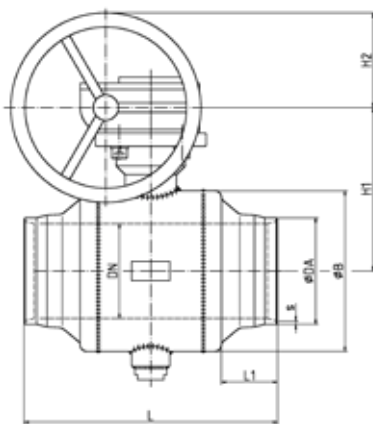
<b>Body</b>	Forged Steel / Steel
<b>Weld Ends</b>	Steel
<b>Ball</b>	Stainless steel; From DN 450: Steel chemically nickel plated
<b>Ball Seals</b>	PTFE
<b>Stem Seals</b>	EPDM

### OPTIONS

- /// Suitable for steam
- /// Further options for this ball valve according to the list on the „Options“ supplementary sheet
- /// For deviating operating conditions please send us a written request stating the fluids, as well as the pressure and temperature range.
- /// Also available automated with electric or pneumatic actuators.



**On request, we can also supply this ball valve in a version with double blocking, in accordance with DGVU 103-002.**



DN [mm]	PN [bar]	DA [mm]	s [mm]	L [mm]	L1 [mm]	B [mm]	H1 [mm]	H2 [mm]	Wgt. [kg]	Article-No.
150	25	168,3	5,0	400	90	254	349	150	90	075.0267
200	25	219,1	6,3	460	96	324	384	150	136	075.0268
250	25	273,0	7,1	540	90	407	355	200	290	075.0269
300	25	323,9	8,0	640	91	508	404	200	458	075.0270
350	25	355,6	8,0	680	86	559	431	200	608	075.0271
400	25	406,4	8,8	900	319	660	490	250	770	075.0272
450	25	457,0	6,3	950	158	720	567	200	ca. 1300	on demand
500	25	508,0	6,3	991	136	814	608	250	ca. 1800	on demand
600	25	610,0	7,1	1143	158	955	737	300	ca. 2500	on demand
700	25	711,0	8,0	1295	187	1116	870	300	ca. 4000	on demand
800	25	813,0	8,8	1397	430	1261	942	400	ca. 4900	on demand
900	25	914,0	10,0	1499	422	1396	1051	400	ca. 7000	on demand
1000	25	1016,0	11,0	1800	576	1561	1180	400	ca. 9900	on demand
1200	25	1220,0	12,5	2400	955	1890	1512	500	ca. 18500	on demand

Ball valves with a nominal size of DN500 and above are made to order in accordance with the customer's requirements. Please refer to the corresponding drawings in case of order.



## BBF/KSF-R-HS

### BALL VALVE WITH WELD ENDS

**DN 65-200 | PN 25**

**REDUCED BORE**

## INFORMATION

### Ball Valve with weld ends

- /// Operating temperature up to +150 °C
- /// Heating water version
- /// Not suitable for oxyacetylene welding

### From DN 150:

- /// Trunnion mounted ball is standard

### From DN 200:

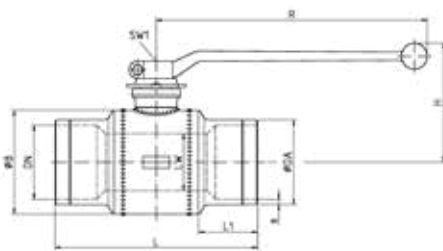
- /// From nominal size DN200 we recommend the use of worm gear units (or planetary gear units up to max. DN400).

## MATERIALS

<b>Body</b>	Forged Steel / Steel
<b>Weld Ends</b>	Steel
<b>Ball</b>	Stainless steel
<b>Ball Seals</b>	PTFE
<b>Stem Seals</b>	EPDM

## OPTIONS

- /// Suitable for steam
- /// Special lengths
- /// Spindle extensions 60mm resp. 100mm
- /// Suitable for steam
- /// Also available automated with electric or pneumatic actuators.
- /// For deviating operating conditions please send us a written request stating the fluids, as well as the pressure and temperature range.



DN/LW [mm]	PN [bar]	Da [mm]	s [mm]	L [mm]	L1 [mm]	B [mm]	H [mm]	R [mm]	SW1 [mm]	Weight [kg]	Article-No.
65/50	25	76.1	3.6	235	70	89	125	205	16	5.2	010.3565
80/65	25	88.9	4.0	265	75	121	140	300	16	8.5	010.3563
100/80	25	114.3	4.0	275	80	140	160	350	22	12.1	010.9764
125/100	25	139.7	4.5	300	80	171	175	350	22	18.3	010.3564
150/125	25	168.3	5.0	335	85	203	195	500	22	28.0	010.6812
200/150	25	219.1	6.3	375	85	254	240	600	32	50.0	010.2349
250/200	25	273.0	7.1	450	100	324	275	600	32	83.0	010.6373



# BBF/KSF-R-HS

## BALL VALVE WITH WELD ENDS

**DN 150-1200 | PN 25**

**REDUCED BORE**

### INFORMATION

**Ball Valve with weld ends**

- /// Operating temperature up to +150 °C
- /// Trunnion mounted ball is standard
- /// From nominal size DN200 we recommend the use of worm gear units (or planetary gear units up to max. DN400).
- /// The worm gear with handwheel is included in the scope of delivery.

### MATERIALS

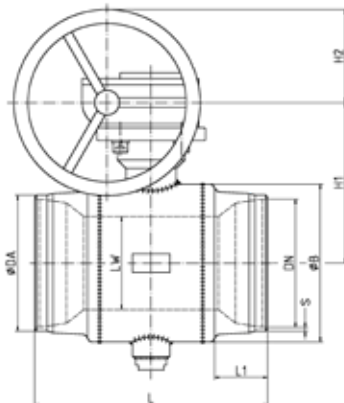
<b>Body</b>	Forged Steel / Steel
<b>Weld Ends</b>	Steel
<b>Ball</b>	Stainless steel; From DN 600: Steel chemically nickel plated
<b>Ball Seals</b>	PTFE
<b>Stem Seals</b>	EPDM

### OPTIONS

- /// Suitable for steam
- /// Further options for this ball valve according to the list on the „Options“ supplementary sheet
- /// For deviating operating conditions please send us a written request stating the fluids, as well as the pressure and temperature range.
- /// On request, the ball valves are also available automated with electric or pneumatic actuators.



On request, we can also supply this ball valve in a version with double blocking, in accordance with DGV 103-002.



DN/LW [mm]	PN [bar]	Da [mm]	s [mm]	L [mm]	L1 [mm]	B [mm]	H1 [mm]	H2 [mm]	Weight [kg]	Article-No.
200/150	25	219.1	6.3	375	85	254	349	150	81	075.0260
250/200	25	273.0	7.1	450	98	324	384	150	101	075.0261
300/250	25	323.9	8.0	700	166	407	355	200	318	075.0262
350/300	25	355.6	8.0	800	170	508	404	200	513	075.0263
400/300	25	406.4	8.8	900	218	508	404	200	610	075.0264
450/400	25	457.0	10.0	950	195	660	490	200	833	075.0265
500/400	25	508.0	11.0	1000	318	660	490	200	885	075.0266
600/500	25	610.0	7.1	1143	212	820	608	250	2000	on demand
700/600	25	711.0	8.0	1316	245	955	737	300	2700	on demand
800/700	25	813.0	8.8	1346	213	1116	870	300	4300	on demand
900/800	25	914.0	10.0	1727	596	1261	942	400	5200	on demand
1000/900	25	1016.0	11.0	1800	572	1396	1051	400	7300	on demand
1200/1000	25	1220.0	12.5	2800	1076	1561	1180	400	11400	on demand

Ball valves of nominal size DN600 are made to order in accordance with the customer's requirements. Please refer to the corresponding drawings in case of order.

# OPTIONS

	Underground Ball valves HE					Standard Ball valves HS						
	KSF V KSF R	ELF/ESF V	EMG/ESF V	KSF V KSF R Tie-in ball valve	KSF V (Hot tapping ball valve)	KSF V KSF R	FSK V FSK R	FSL V	FSL/KSF V + FSK/KSF V FSL/KSF R + FSK/KSF R	KSG/KSF V	KSG V	KSF V (Hot tapping ball valve)
Variable lengths for underground installation <sup>1</sup>	✓											
Special lengths		✓	✓			✓		✓	✓	✓		
Variable stem extensions for underground installation <sup>2</sup>	✓											
Stem extension 60 mm /100 mm						✓	✓	✓	✓	✓	✓	✓
Spigot for drain and vent ball valve	✓											
Test connection from DN150 (with plug or ball valve)						✓	✓	✓				
greater wall thicknesses for extreme axial loads or corrosion surcharges	✓											
With Flange/Weld end from DN125					✓							
Suitable for steam	✓			✓	✓	✓	✓	✓			✓	

<sup>1</sup>Variable overall lengths for installation in the ground:

The overall lengths specified in the catalog correspond to the standard dimensions. Other overall lengths are available on request as special production.

<sup>2</sup>Variable spindle extensions for buried installation:

The dome height of 350 mm shown in the catalog corresponds to the standard. In addition, dome heights of 500 mm, 750 mm and 1000 mm can be manufactured on request.

Tender specification texts are available for download on our website.